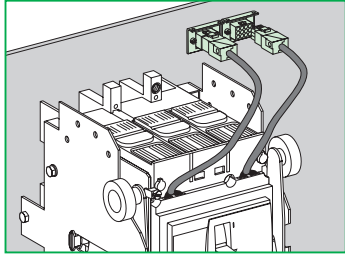


Compact NSX100-630
FPower NSX / GV7
Compact NSJ
 9-wire auxiliary connector
 Prise déconnectable 9 fils
 Toma desconectable para 9 hilos



Merlin Gerin
 Square D
 Idemecanique

Schneider
 Electric

GHD16283AA-03

Schneider Electric Industries SAS
 89, boulevard Franklin Roosevelt
 F-92500 Rueil-Malmaison (France)
 Tel: + 33 (0)1 41 29 85 00
 www.schneider-electric.com



© 2007 Schneider Electric.
 All rights reserved.

IMPORTANT NOTE

- This device must be installed by a qualified electrician.
- We cannot accept any responsibility for failure to follow the instructions provided in this document.

REMARQUE IMPORTANTE

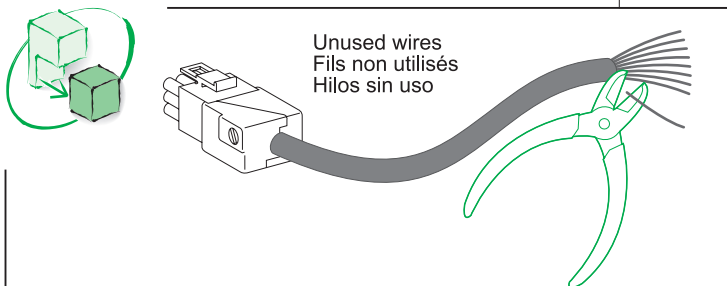
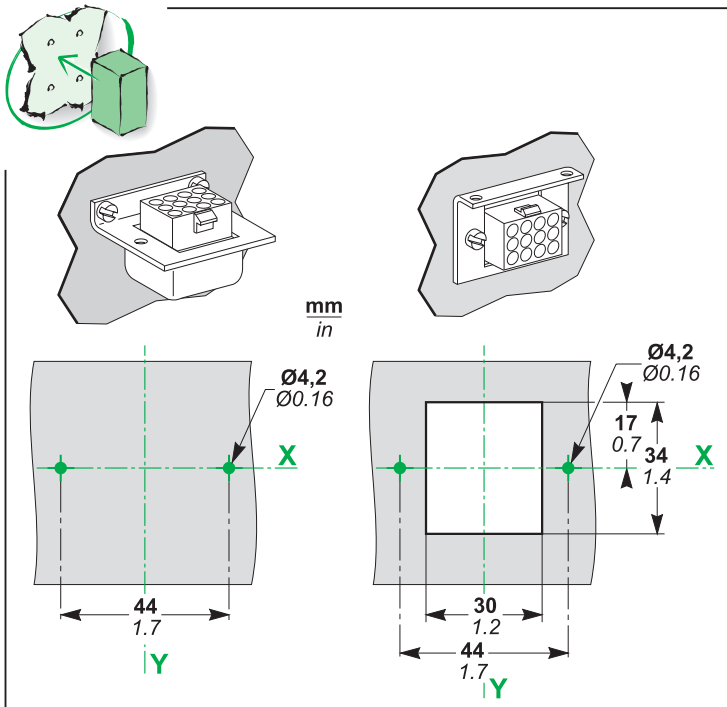
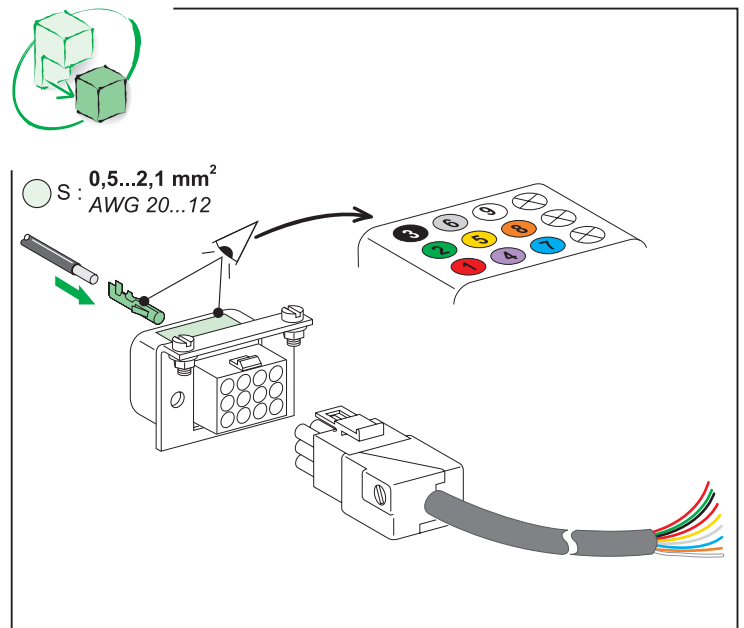
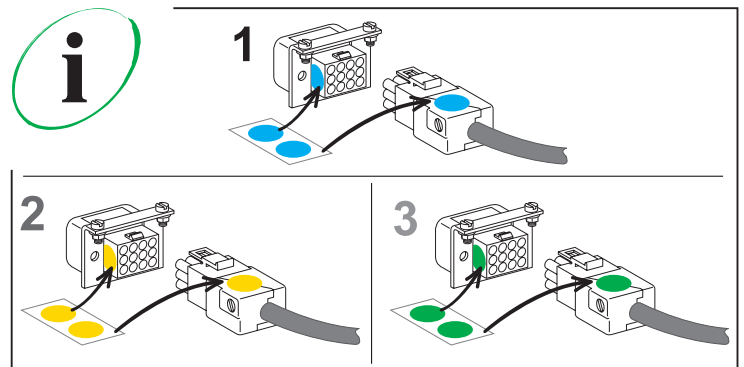
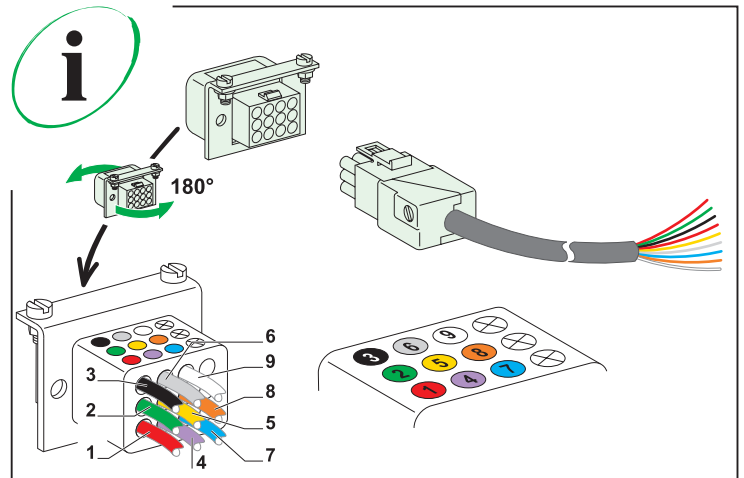
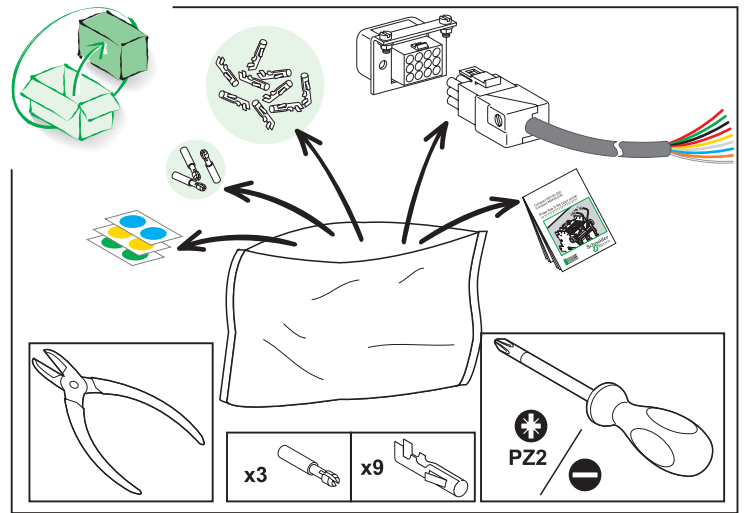
- L'installation de cet appareil doit être effectuée par des professionnels de l'électricité.
- Le non-respect des indications de la présente notice ne saurait engager la responsabilité du constructeur.

OBSERVACIÓN IMPORTANTE

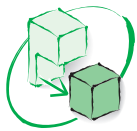
- La instalación y mantenimiento de este aparato sólo debe ser realizado por electricistas profesionales.
- El fabricante no se hace responsable en caso de no cumplir con las indicaciones expuestas en este aviso.

重要注意事項

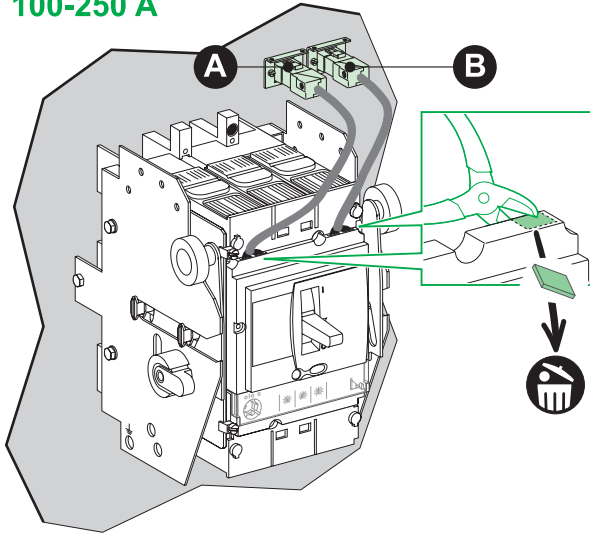
- 本装置必须由合格的电工进行安装。
- 我们不承担任何因未遵循本文档中的指南而导致的责任。



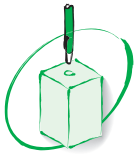
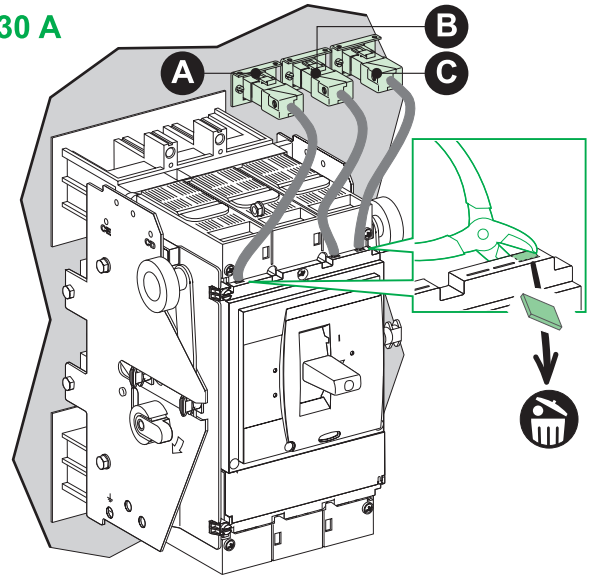
GHD16283AA-03



100-250 A



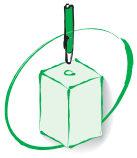
400-630 A



100-250 A

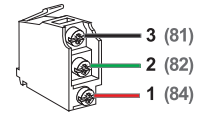
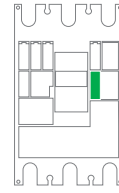
400-630 A

<p>A</p>	<p>OF1 AX1</p>
	<p>SD AL</p>
	<p>MN / MX SHT / UVR</p>
	<p>SDx / SDTAM</p>



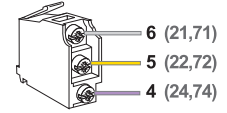
100-250 A 400-630 A

SDE
OAL

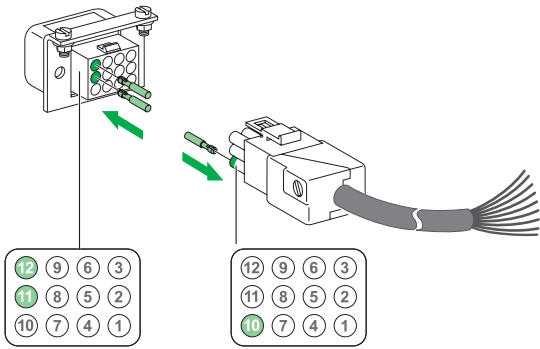


OF2
AX2

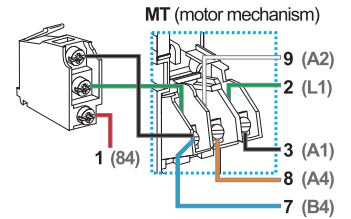
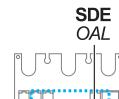
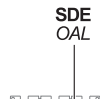
SDV
vigi overcurrent
trip switch



B



MT
(motor mechanism)

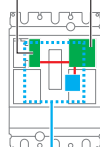


MTc
(Télécommande
communicante)

MTc
+
NSX cord
+
BSCM

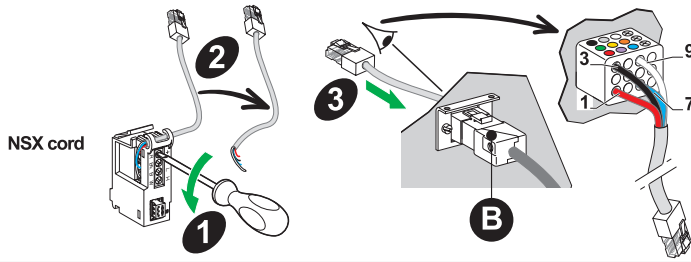
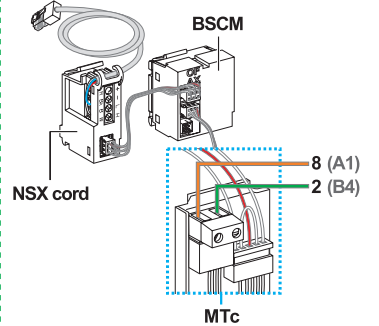
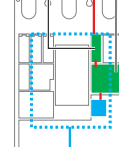
NSX cord

BSCM



NSX cord

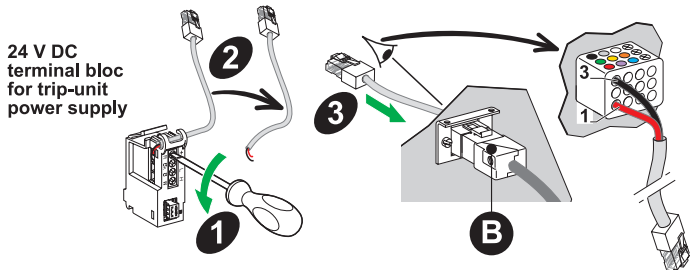
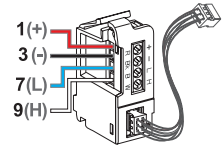
BSCM



NSX cord

NSX cord

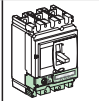
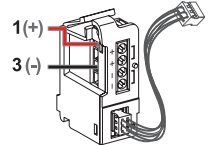
NSX cord



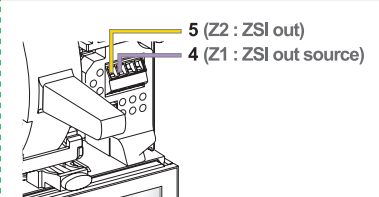
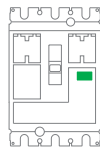
24 V DC
terminal bloc
for trip-unit
power supply

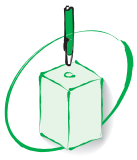
24 V DC
terminal bloc

24 V DC
terminal bloc

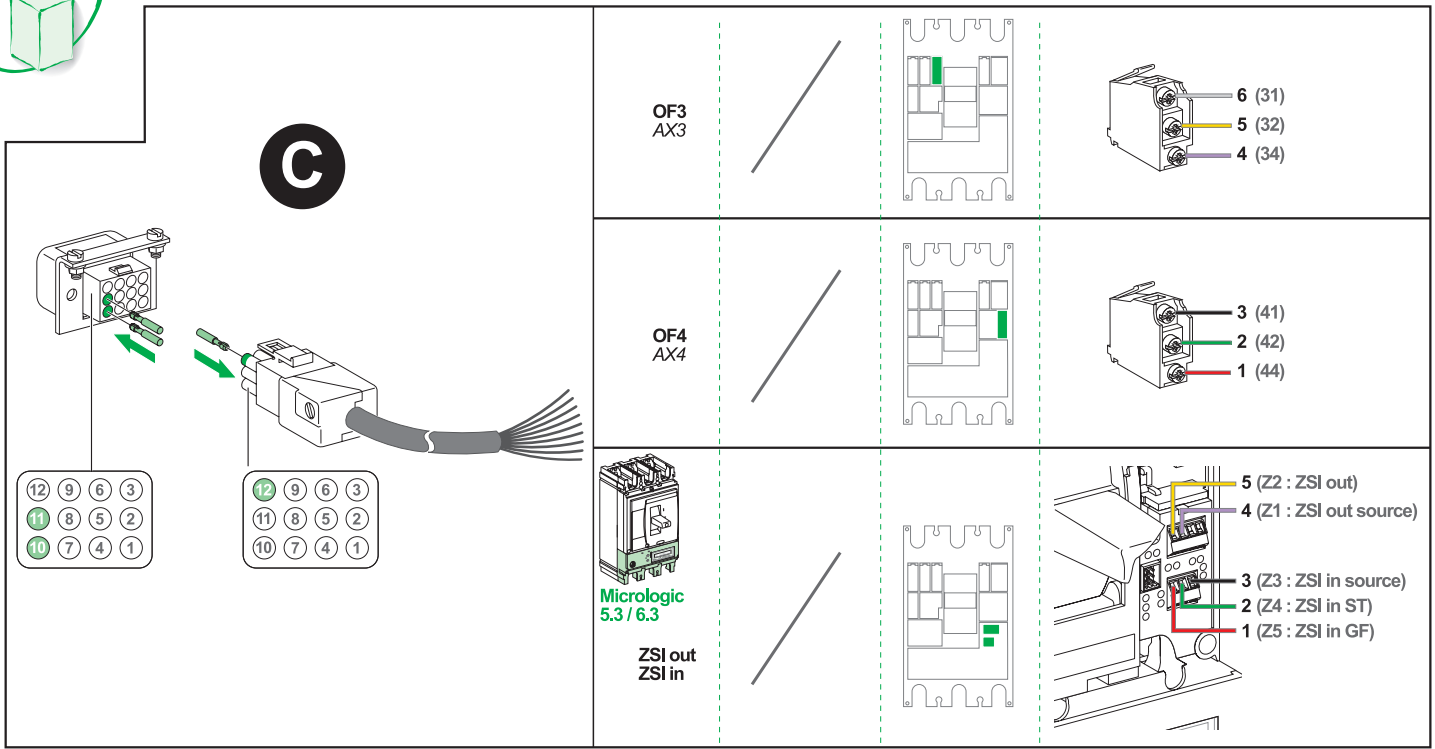


Micrologic
5.2 / 6.2
ZSI out





100-250 A 400-630 A



100-250 A

400-630 A

100-250 A			400-630 A					
3	6	9	3	6	9	3	6	9
SD	OF1 ^{or/ou} SDx ^{or/ou} SDTAM	MN ^{or/ou} MX ^{or/ou} SDx ^{or/ou} SDTAM	SDE ^{or/ou} MT ^{or/ou} 24 V (-) ^{or/ou} NSX cord (-)	OF2 ^{or/ou} SDV	MT ^{or/ou} NSX cord (H)	OF4 ^{or/ou} ZSI in source	OF3	
2	5	8	2	5	8	2	5	8
SD	OF1 ^{or/ou} SDx ^{or/ou} SDTAM	MX	SDE ^{or/ou} MT ^{or/ou} MTc	OF2 ^{or/ou} SDV ^{or/ou} ZSI out (100-250A)	MT ^{or/ou} MTc	OF4 ^{or/ou} ZSI in ST	OF3 ^{or/ou} ZSI out	
1	4	7	1	4	7	1	4	7
SD	OF1 ^{or/ou} SDx ^{or/ou} SDTAM	MN	SDE ^{or/ou} 24 V (+) ^{or/ou} NSX cord (+)	OF2 ^{or/ou} SDV ^{or/ou} ZSI out source (100-250A)	MT ^{or/ou} NSX cord (L)	OF4 ^{or/ou} ZSI in GF	OF3 ^{or/ou} ZSI out source	

OF1 / OF2 / OF3 / OF4 : ON/OFF indication contact / Contact de position "ouvert/fermé" de l'appareil / Contacto auxiliar OF "abierto/cerrado"
SD : Trip indication contact / Contact de signalisation déclenchement / Contacto de señalización de defecto
SDE : Fault trip indication contact / Contact de signalisation défaut électrique / Contacto de señalización de defecto eléctrico
SDV : Earth leakage indication contact / Contact de signalisation déclenchement différentiel / Contacto de señalización de defecto diferencial
SDTAM : Thermal fault early-break contact / Module signal défaut thermique avancé à la manœuvre / Módulo de señalización de defecto térmico avanzado a la maniobra
SDX : Output early-break contact / Module de signalisation à distance / Módulo de señalización a distancia
MN : Undervoltage release / Déclencheur à minimum de tension / Bobina de mínima tensión
MX : Shunt trip / Déclencheur à émission de courant / Bobina a emisión de corriente
24 V : Micrologic power supply / Alimentation Micrologic / Alimentación Micrologic
ZSI out / in : Zone Selective Interlocking / Sélectivité logique ZSI / Selectividad lógica
MT : remote control / Télécommande / Mando eléctrico
MTc : COM remote control / Télécommande communicante / Mando eléctrico comunicante
NSX cord : Communication NSX cord terminal block / Bornier NSX cord de communication / Bornero cable de comunicación NSX